

# KARIBAN

**REFERENCE :** K232

**SIZES :** S\_M\_L\_XL\_XXL\_3XL

**COMPOSITION :**

Main fabric : Polyester / Combed Cotton pique 65/35 - 220  
65%polyester / 35%cotton

Main fabric : Polyester / Combed Cotton pique 65/35 - 220 For  
contrasted yokes 65%polyester / 35%cotton

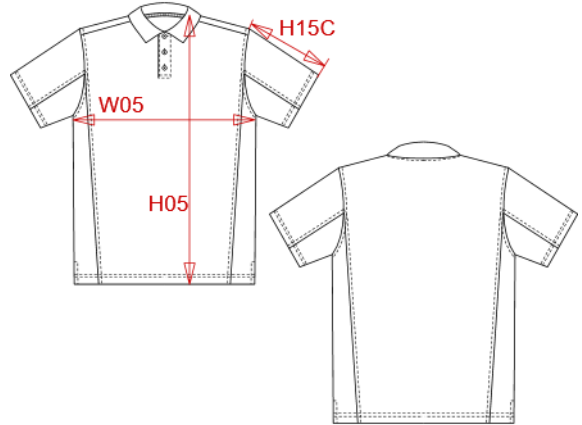
**WEIGHT :**

Main fabric : 220 gsm

Main fabric : 220 gsm

**ARTICLE WEIGHT :**

300 gr/pc



DESCRIPTION								COLORS		PANTONE SERIGRAPHIE	
<b>Français :</b> Polo bicolore								White / Red	White / 200C		
<b>English :</b> Bi-colour short sleeve polo shirt								Navy / White	433C / White		
<b>Nederlands :</b> Tweekleurige polo								White / Royal blue	White / 287C		
<b>Deutsch :</b> Zweifarbiges polohemd								Red / Black	200C / Black		
<b>Español :</b> Polo piqué bicolor								Black / Lime	Black / 367C		
<b>Italiano :</b> Polo bicolore								Navy / Sky blue	433C / 5425C		
<b>Português :</b> Polo pique bicolor								Black / Slate grey	Black / 424C		
MEASUREMENT								Black / Orange	Black / 1585C		
Description	S	M	L	XL	XXL	3XL		Navy / Deep pink	433C / 1905C		
<b>H05 (M)</b> Hauteur totale / Total height	70	72	74	76	78	80		Light grey / Red	416C / 200C		
<b>W05 (M)</b> 1/2 largeur poitrine / 1/2 chest width	50	53	56	59	62	65		Dark grey / Orange	447C / 1585C		
<b>H15C (M)</b> Longueur manche courte / Short sleeve length	22,25	23	23,75	24,50	25,25	26					
CARE LABEL											
PACKING											
Box	25 pcs / box S-M => L:54cm W:37cm H:17cm GW:9.40kg NW:7.60kg L-XL => L:58cm W:38cm H:17cm GW:10.40kg NW:8.60kg XXL-3XL => L:60cm W:40cm H:18cm GW:11.20kg NW:9.40kg										